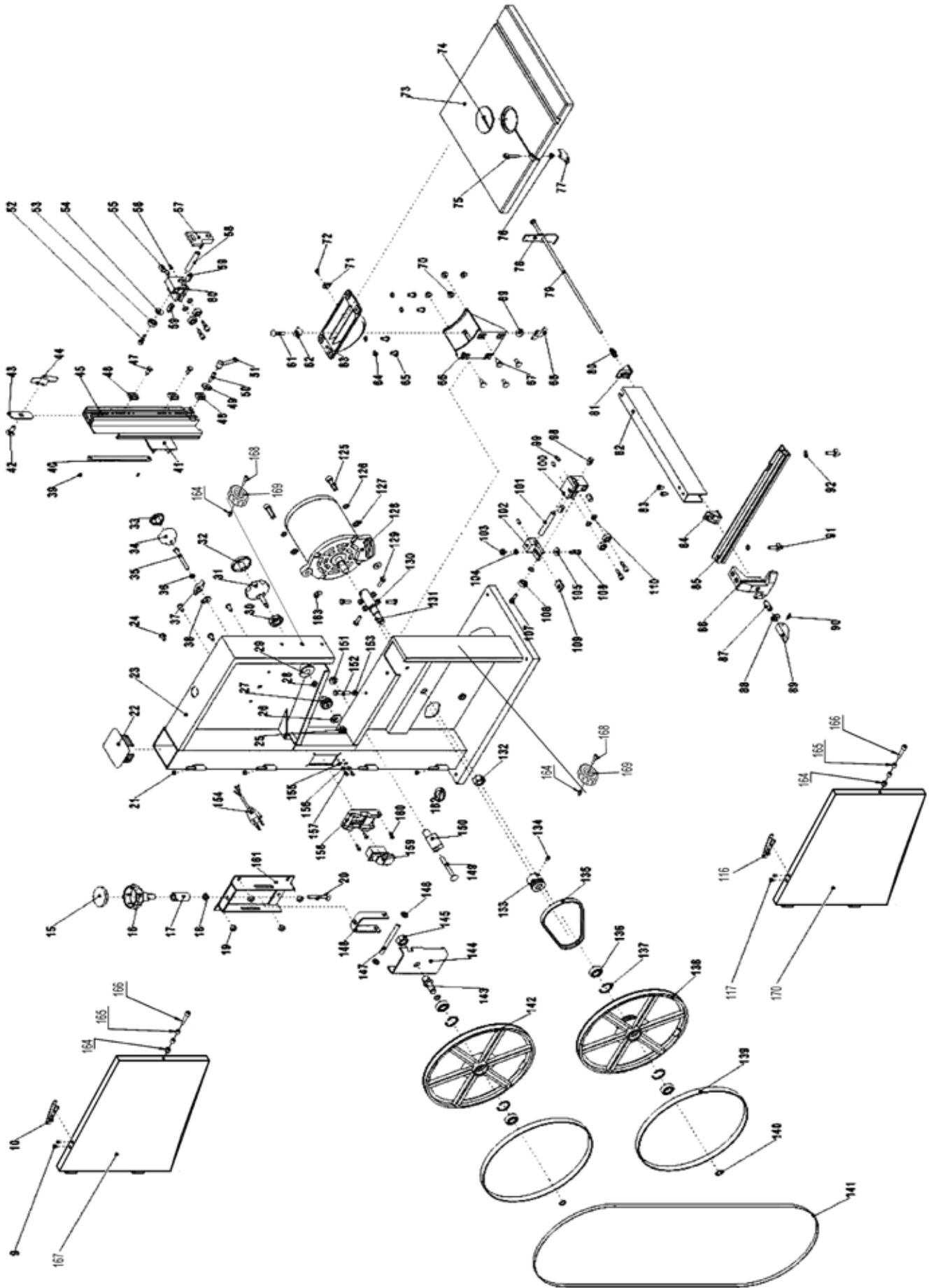


10" Woodworking Bandsaw



Parts List

PARTS DIAGRAM



PARTS LIST

KEY NO.	DESCRIPTION	MFG. PART NO.	KEY NO.	DESCRIPTION	MFG. PART NO.
9	Rivet 4x8	P10-305-9	48	T-nut M6	P10-305-48
10	Leaf Spring	P10-305-10	49	Washer 6	P10-305-49
15	Blade Tension Knob Cap	P10-305-15	50	Hex. Socket Set Screw M6x25	P10-305-50
16	Blade Tension Knob Body	P10-305-16	51	Ratchet handle	P10-305-51
17	Blade Tensioner	P10-305-17	52	Guide Adjust Screw	P10-305-52
18	Washer 8	P10-305-18	53	Ball Bearing 6mm	P10-305-53
19	Flange Nut M6	P10-305-19	54	Washer 6	P10-305-54
20	Carriage Bolt M8x50	P10-305-20	55	Bearing Mount Cylinder	P10-305-55
21	Bushing Ring	P10-305-21	56	Hex. Socket Set Screw M6x10	P10-305-56
22	Top Plug	P10-305-22	57	Upper Guide Mount	P10-305-57
23	Frame	P10-305-23	58	Upper Guide Shaft	P10-305-58
24	Hex. Bolt M6x12	P10-305-24	59	Bearing Mount Cylinder w/Cap	P10-305-59
25	Lock Nut M6	P10-305-25	60	Upper Guide Body	P10-305-60
26	Washer 6	P10-305-26	61	Carriage Bolt M6x30	P10-305-61
27	Gear	P10-305-27	62	Glide Piece	P10-305-62
28	Special Spring Washer 8	P10-305-28	63	Upper Table Trunion	P10-305-63
29	Tube	P10-305-29	64	Lock Washer 6	P10-305-64
30	Plastic Nut M20	P10-305-30	65	Hex. Bolt M6x12	P10-305-65
31	Adjusting Knob Body	P10-305-31	66	Lower Table Trunion	P10-305-66
32	Adjusting Knob Cap	P10-305-32	67	Carriage Bolt M6x16	P10-305-67
33	Blade Tracking Knob Cap	P10-305-33	68	Wing Nut M6	P10-305-68
34	Blade Tracking Knob Body	P10-305-34	69	Washer 6	P10-305-69
35	Hex. Bolt M6x60	P10-305-35	70	Flange Nut M6	P10-305-70
36	Hex. Nut M6	P10-305-36	71	Indicator	P10-305-71
37	Wing Nut M6	P10-305-37	72	Tapping Screw ST3.5x9.5	P10-305-72
38	Washer 6	P10-305-38	73	Table	P10-305-73
39	Tapping Screw ST3.5x13	P10-305-39	74	Table Insert	P10-305-74
40	Rack	P10-305-40	75	Hex. Socket Head Cap Scr M6x30	P10-305-75
41	Slider	P10-305-41	76	Washer 6	P10-305-76
42	Carriage Bolt M8x20	P10-305-42	77	Wing Nut M6	P10-305-77
43	Bolt Guide	P10-305-43	78	Fence Clamper	P10-305-78
44	Wing Nut M8	P10-305-44	79	Threaded Rod	P10-305-79
45	Blade Guide	P10-305-45	80	Spring	P10-305-80
46	T-nut M6	P10-305-46	81	Rod Guide	P10-305-81
47	Hex. Bolt M6x10	P10-305-47	82	Fence	P10-305-82

NOTE: Please reference the Manufacturer's Part Number when calling for Replacement Parts.
For Parts under Warranty, the serial number of your machine is required.

PARTS LIST

KEY NO.	DESCRIPTION	MFG. PART NO.	KEY NO.	DESCRIPTION	MFG. PART NO.
83	Flat Countersunk Scr M6x10	P10-305-83	135	Drive Belt	P10-305-135
84	Rod Guide	P10-305-84	136	Ball Bearing 12mm	P10-305-136
85	Guide Rail	P10-305-85	137	Retaining Ring 28	P10-305-137
86	Fence Carrier	P10-305-86	138	Lower Wheel	P10-305-138
87	Special Screw	P10-305-87	139	Tire	P10-305-139
88	Washer 10	P10-305-88	140	Retaining Ring 12	P10-305-140
89	Fence Handle	P10-305-89	141	Saw Blade	P10-305-141
90	Roll Pin 3x18	P10-305-90	142	Upper Wheel	P10-305-142
91	Star knob screw	P10-305-91	143	Upper Bearing Bolt	P10-305-143
92	Washer 6	P10-305-92	144	Wheel Carrier Bracket	P10-305-144
98	Bearing Mount Cylinder	P10-305-98	145	Hex. Nut M14	P10-305-145
99	Hex. Socket Set Screw M6x10	P10-305-99	146	Star Lock	P10-305-146
100	Lower Guide Body	P10-305-100	147	Mount Shaft	P10-305-147
101	Lower Guide Shaft	P10-305-101	148	Blade Tensioner	P10-305-148
102	Lower Guide Mount	P10-305-102	149	Carriage Bolt M8x65	P10-305-149
103	Lock Nut M6	P10-305-103	150	Brush Strip	P10-305-150
104	Washer 6	P10-305-104	151	Flange Nut M8	P10-305-151
105	Washer 6	P10-305-105	152	Hex. Bolt M6x35	P10-305-152
106	Hex. Bolt M6x20	P10-305-106	153	Hex. Nut M6	P10-305-153
107	Guide Adjust Screw	P10-305-107	154	Cable w/Plug	P10-305-154
108	Ball Bearing 6mm	P10-305-108	155	Lock Washer 4	P10-305-155
109	Guide Key	P10-305-109	156	Washer 4	P10-305-156
110	Washer 6	P10-305-110	157	Pan Head Screw M4x8	P10-305-157
115	Lower Door	P10-305-115	158	Switch Cover Plate	P10-305-158
116	Leaf Spring	P10-305-116	159	Lock Switch	P10-305-159
117	Rivet 4X8	P10-305-117	160	Pan Head Screw M4x12	P10-305-160
125	Hex. Socket Hd Cap Scr M8x30	P10-305-125	161	Tension Bracket	P10-305-161
126	Spring Washer 8	P10-305-126	162	Rubber Tube	P10-305-162
127	Washer 8	P10-305-127	163	Washer 8	P10-305-163
128	Motor	P10-305-128	164	Nut	P10-305-164
128A	Motor Capacitor (not shown)	P10-305-128A	165	Bushing	P10-305-165
129	Hex. Bolt M6x20	P10-305-129	166	Hex Screw	P10-305-166
130	Hex. Nut M6	P10-305-130	167	Upper Door	P10-305-167
131	Lower Bearing Bolt	P10-305-131	168	Hex Screw	P10-305-168
132	Hex. Nut M14	P10-305-132	169	Handle	P10-305-169
133	Motor Pulley	P10-305-133	170	Lower Door	P10-305-170
134	Hex. Socket Set Scr M6x10	P10-305-134			

NOTE: Please reference the Manufacturer's Part Number when calling for Replacement Parts.
For Parts under Warranty, the serial number of your machine is required.

ACCESSORIES



13-913 10" Bandsaw Stand



13-920 Miter Gauge



C10-393 Table Insert (4pk)



Bandsaw Blades